

# Olinqua IGNITE

Working together for better health



# Working together for better health

**Olinqua IGNITE is empowering Australian hospitals, aged care facilities and their essential workers with its Connected Workforce and Connected Environment technology.**



# Introducing Olinqua

Olinqua delivered its first digital hospital alarming and messaging solution in 2012, and subsequently its first clinical task management system in 2013.

Our solution was one of the earliest implementations of integrated, automated clinical task management in an Australian hospital.

## 01: Our Vision

Better, smarter, safer global healthcare, powered by Olinqua.

## 02: Our Mission

To improve healthcare for everyone, by delivering effective communication technology that drives confidence.

## 03: Our Impact

Today, Olinqua is accelerating, transforming and empowering over 70 Australian hospitals and aged care facilities.

Our DuressAware staff safety innovation has gained national recognition as one of the most well-engineered safety applications.

Our overall business platform is fast becoming a globally recognised leader in next generation workforce technologies.

The Olinqua IGNITE solution architecture has underpinned critical messaging infrastructure for businesses for over seven years.

Throughout this period, it has presented as a class-leading application for virtualised on-premises deployments, engineered using enterprise-grade Microsoft technologies to be resilient, highly available and fully compatible with modern virtualisation environments.

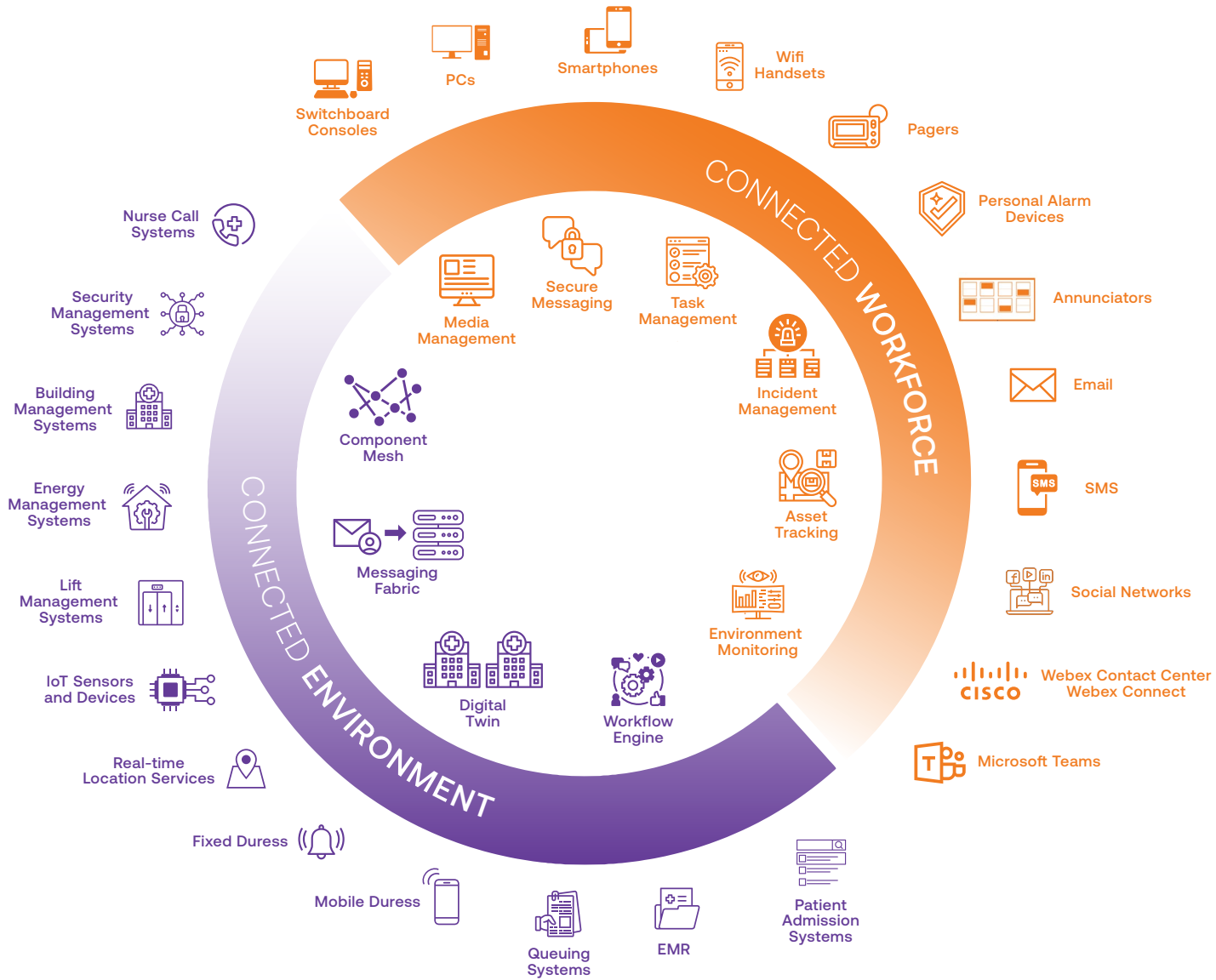
Now, in its third generation, the Olinqua IGNITE architecture provides a seamless transition path for customers into the Microsoft Azure cloud, with services spanning cloud and on-premises infrastructure.

The on-premises components retain the traditional Olinqua IGNITE virtualised architecture. This is now augmented with cloud components which fully leverage Microsoft Azure's serverless application hosting capabilities to provide a class-leading cloud architecture of serverless components which do not require maintenance or patching at the operating system level.



# Olinqua IGNITE

The Olinqua IGNITE application architecture is modular, comprising two distinct layers: the connected environment and connected workforce.



# Connected Environment

The Connected Environment components provide the solution's platform elements:

## Component host

A component hosting architecture in which pre-built component DLLs can be deployed into their host processes using configuration, without requiring a build process.

## Message Delivery

An inter-component messaging delivery fabric which supports reliable delivery and other features required for critical system workflows.

## Digital Twin

A digital twin, which represents a real-time source for all stateful information about the operational environment, for use by the business logic applications in real-time.

## Integration Edge

Integration Edge adaptors purpose is to translate message and event data between the platform's native message delivery and external systems and devices.

## Connected Workforce

Business logic  
User experiences  
Collaboration Edge



## Connected Environment

Component host  
Message delivery  
Digital Twin  
Integration Edge

# Connected Workforce

The Connected Workforce components provide the solution's business logic and user-facing experiences. This includes the application's modules:

## Secure Messaging

For the secure exchange of text communications between all platform users, including automated notifications from incoming data, system events and workflows.

## Media Management

For the secure exchange and storage of images on the platform.

## Task Management

For the electronic management of tasks across the workforce.

## Incident Management

For the electronic management of critical incident alarms and responses.

## Asset Tracking

For locating assets, perimeter breach alerting, par value monitoring and other asset related features.

## Environment Monitoring

For the electronic management of critical incident alarms and responses.

# See IGNITE in action:

## Westmead Hospital

Western Sydney Local Health District

Central Acute Services Building  
(CASB)

\$500M Redevelopment Project

### Communications & Collaboration System

Chosen as the coherent structure for all systems to be able to integrate centrally.

### Real Time Location Service (RTLS)

- Full geo-spatial model
- 14 floors 110,000 m<sup>2</sup>
- Mobile Duress
- Asset Tracking

### Messaging Integration Engine (MIE)

49 systems integrated: Nurse call; building management system; security; fire; emergency lighting; reverse osmosis; generators; helipad lighting; etc.



*“There has been no solution or integration that Olinqua cannot handle — from a hot water service to an enterprise BMS or nurse call — integrates to all of our internal systems with ease.”*

Technical Services Manager,  
Western Sydney Local Health District

## St John of God Midland

Western Australia

307 bed hospital, operated as a PPP, serving eastern Perth and the Wheatbelt region

### Communications & Collaboration System

Code Black mobilisation and management. Facility system alarm notifications.

### Real Time Location Service (RTLS)

- Full geo-spatial model
- 4 floors
- 49,000 m<sup>2</sup>
- Mobile Duress

### Messaging Integration Engine (MIE)

Six systems integrated: Nurse call; building management system; security; fire; access control; medical & drug fridges.



*“With Olinqua there are so many ways that the [platform] impact St John of God Health positively. At Midland, [Olinqua] looks after one of our most critical safety systems.”*

Digital and Technology Business Partner,  
St John of God Midland



### Contact us

(03) 9674 7188

Email: [hello@olinqua.com](mailto:hello@olinqua.com)

LinkedIn: [@olinqua](https://www.linkedin.com/company/olinqua)

Melbourne | Perth | Sydney

[olinqua.com](https://olinqua.com)

